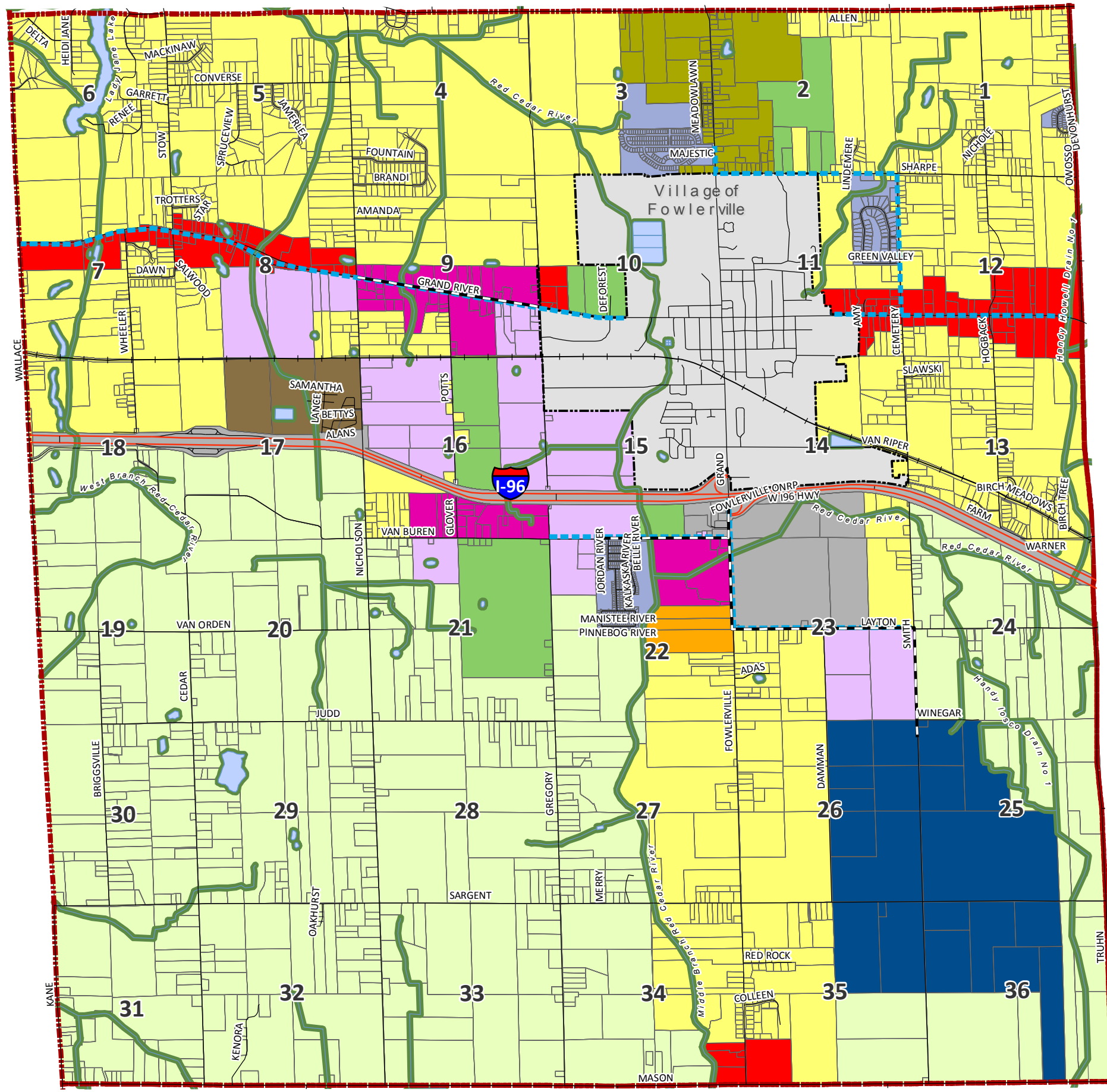


Conway Township

Legend

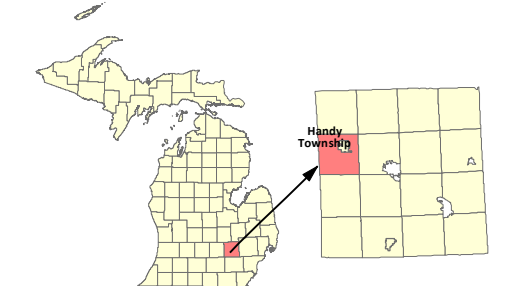
- Proposed and Existing Sewer Lines
- Planned Sidewalks
- Rivers and Streams
- Open Water
- 100' Lakes, Rivers, and Streams Buffer
- Agriculture
- Medium Density Residential
- High Density Residential
- Multi Family Residential
- Manufactured Housing Community
- Highway Service Commercial
- Mixed Use
- Planned Development
- Local Commercial
- Research and Development
- Industrial
- Recreation/Open Space



Leroy Township, Ingham County

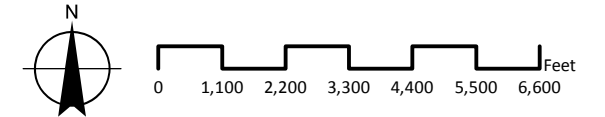
Howell Township

Iosco Township



FUTURE LAND USE MAP

Handy Township Livingston County



Carlisle/Wortman Associates, Inc.
Ann Arbor, Michigan
July 6, 2018

